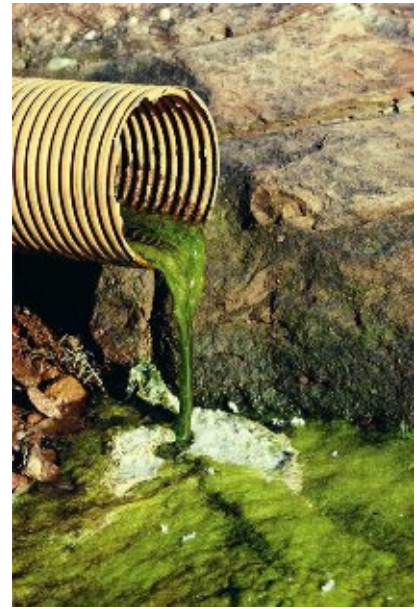


# YOUR INPUT MATTERS!

## Get Active With Tri-Valley CAREs:

- Sign a letter to Livermore Lab asking for precautions to protect the community
- Check out our website at [www.trivalleycares.org](http://www.trivalleycares.org)
- Call us (925) 443-7148



Livermore Lab is planning to capture the off-site contaminated groundwater plume emanating from its facility. The Lab will dig a trench and lay a pipeline to Big Trees Park. (See the map below) This project could make the highly toxic plutonium in the soil airborne. Tri-Valley CAREs is asking the Lab to take precautions to protect the neighbors, local children, and workers, by using air monitors for radioactivity to ensure that the community is safe.

This Friday, January 27<sup>th</sup>, the City of Livermore Environment and Energy Committee will hold a Special Meeting to discuss the pipeline extension and how it will affect the surrounding community. The meeting will take place at 6 pm at 3500 Robertson Park Road Maintenance Building. You are invited!

